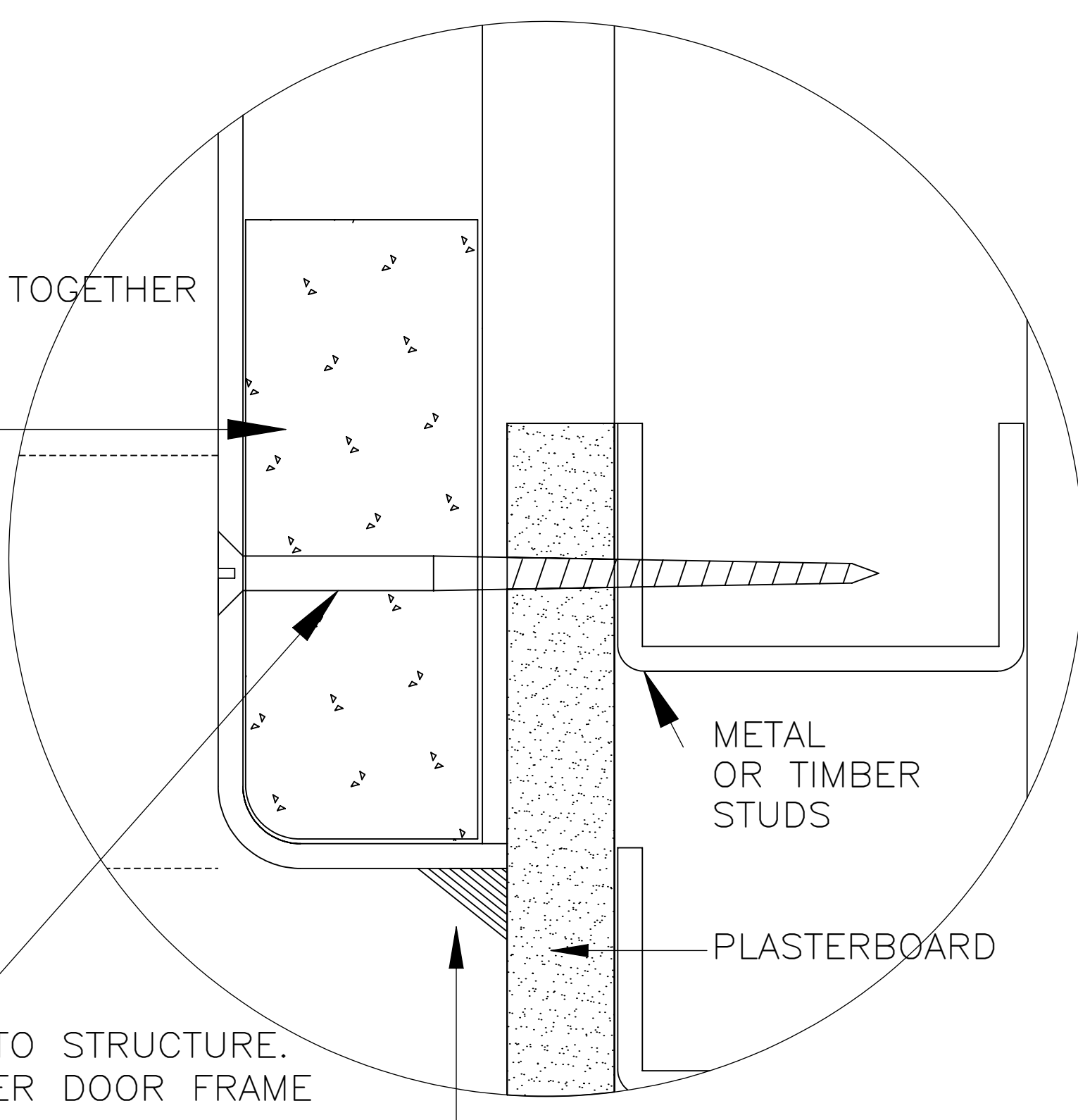
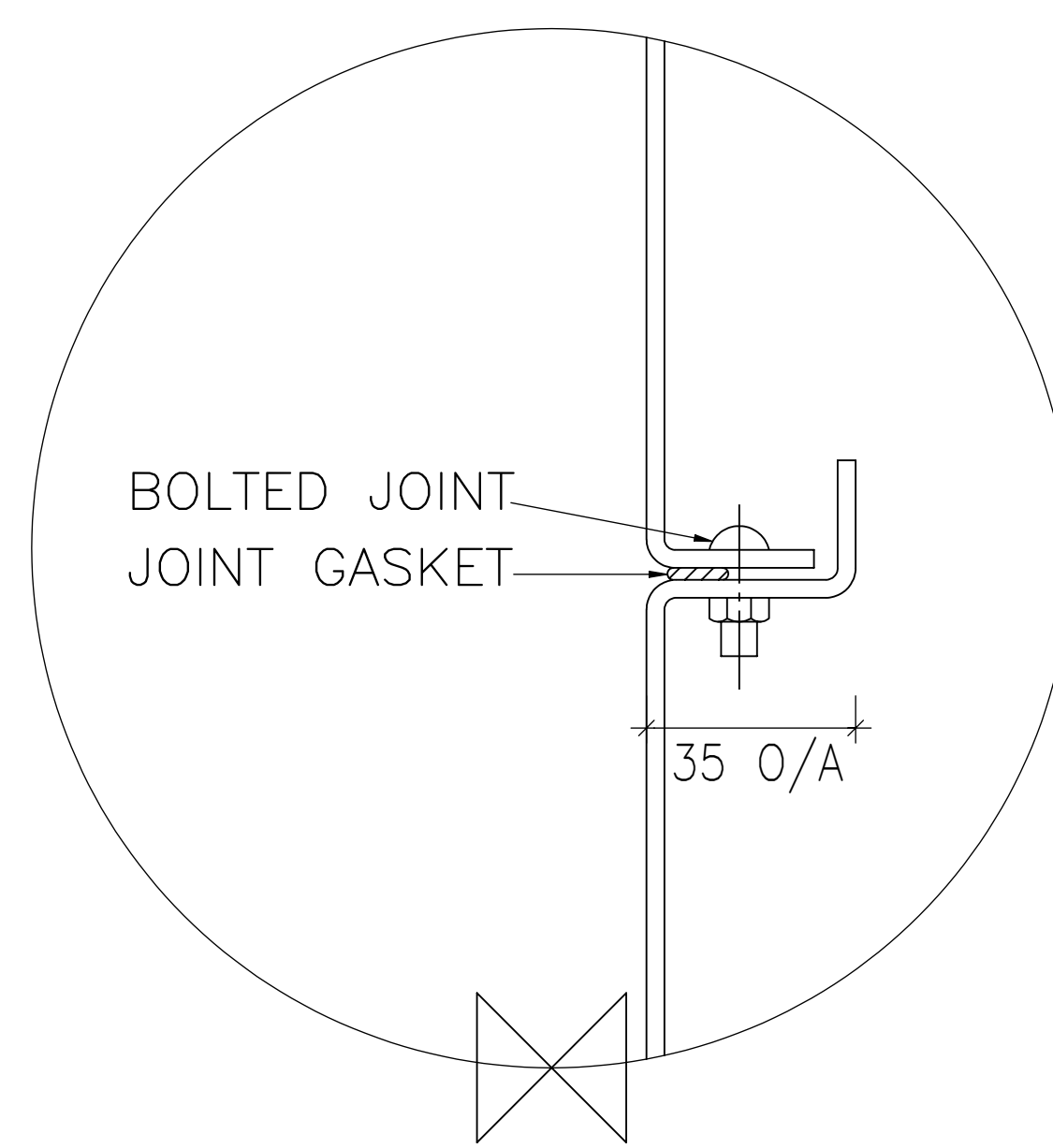


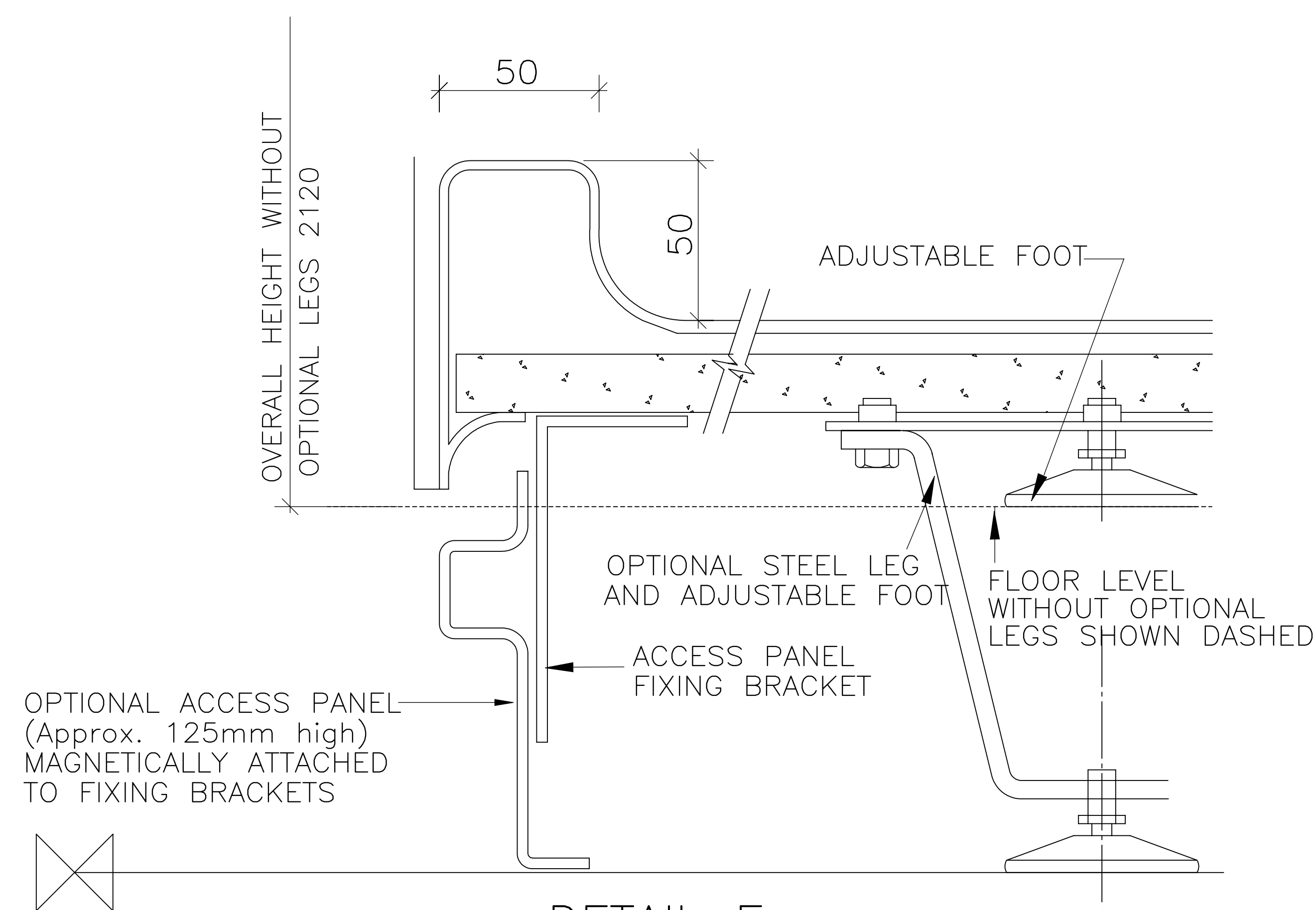
DETAIL A



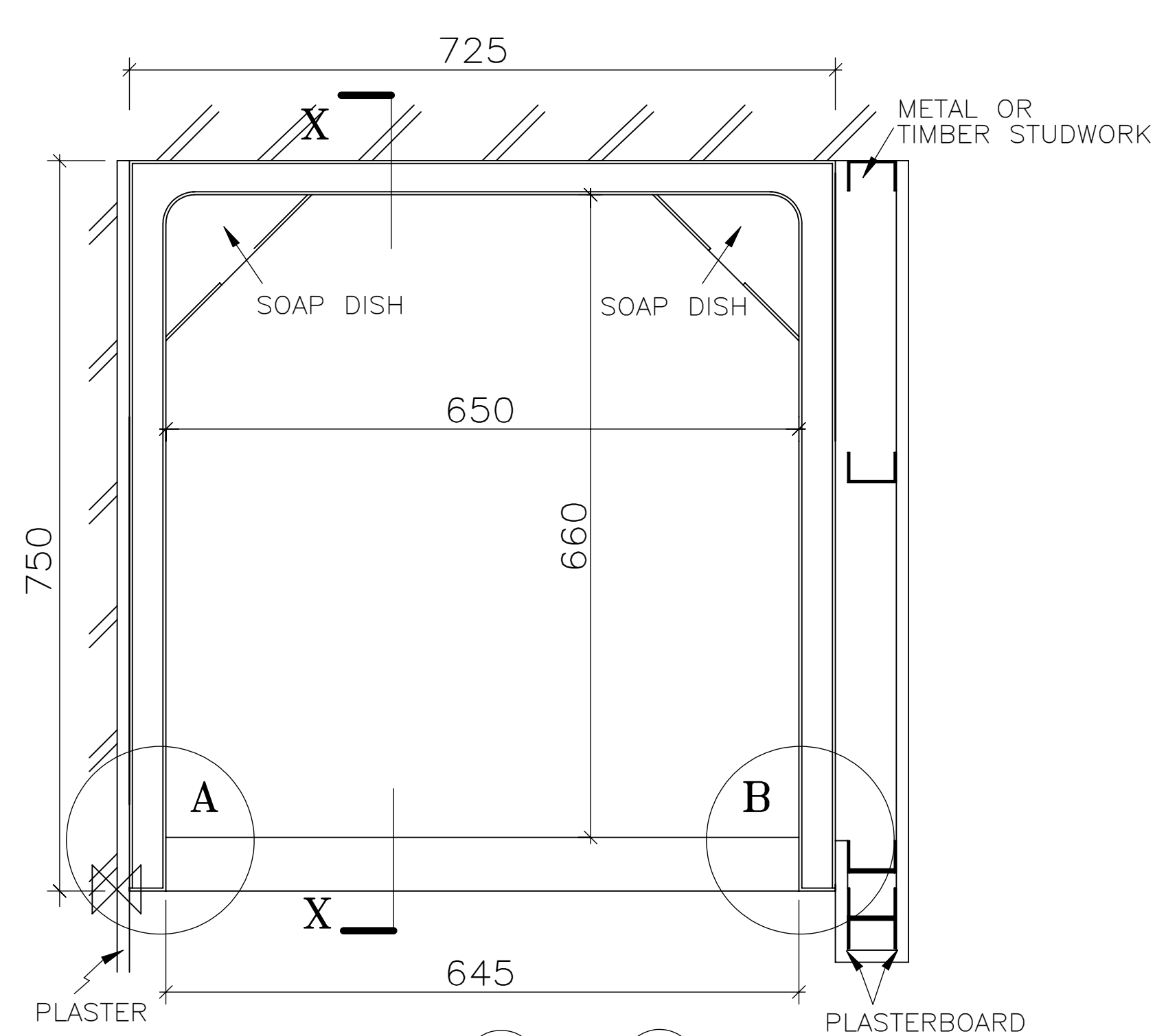
DETAIL B
N.T.S.



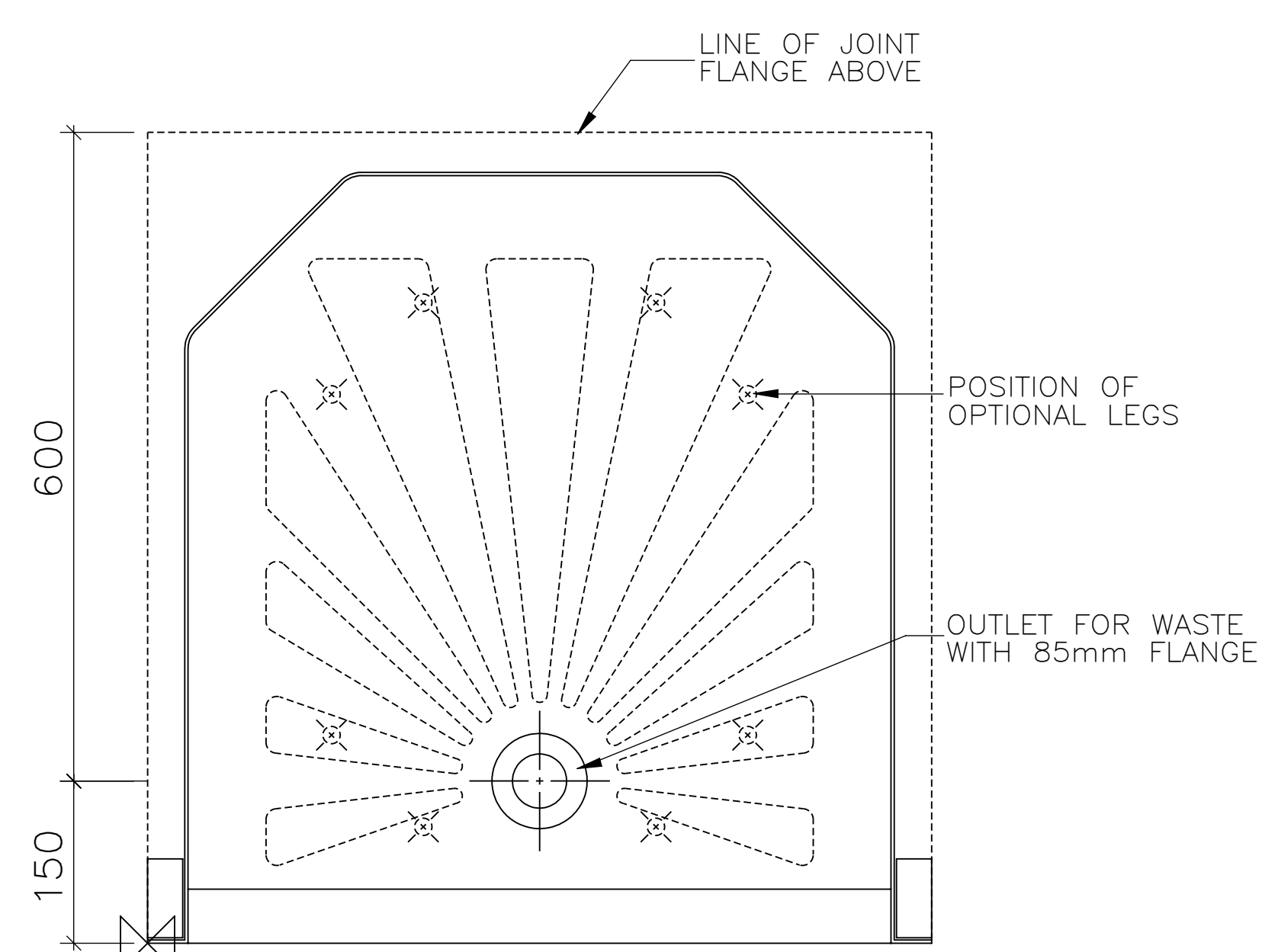
DETAIL C
VERTICAL SECTION THROUGH JOINT



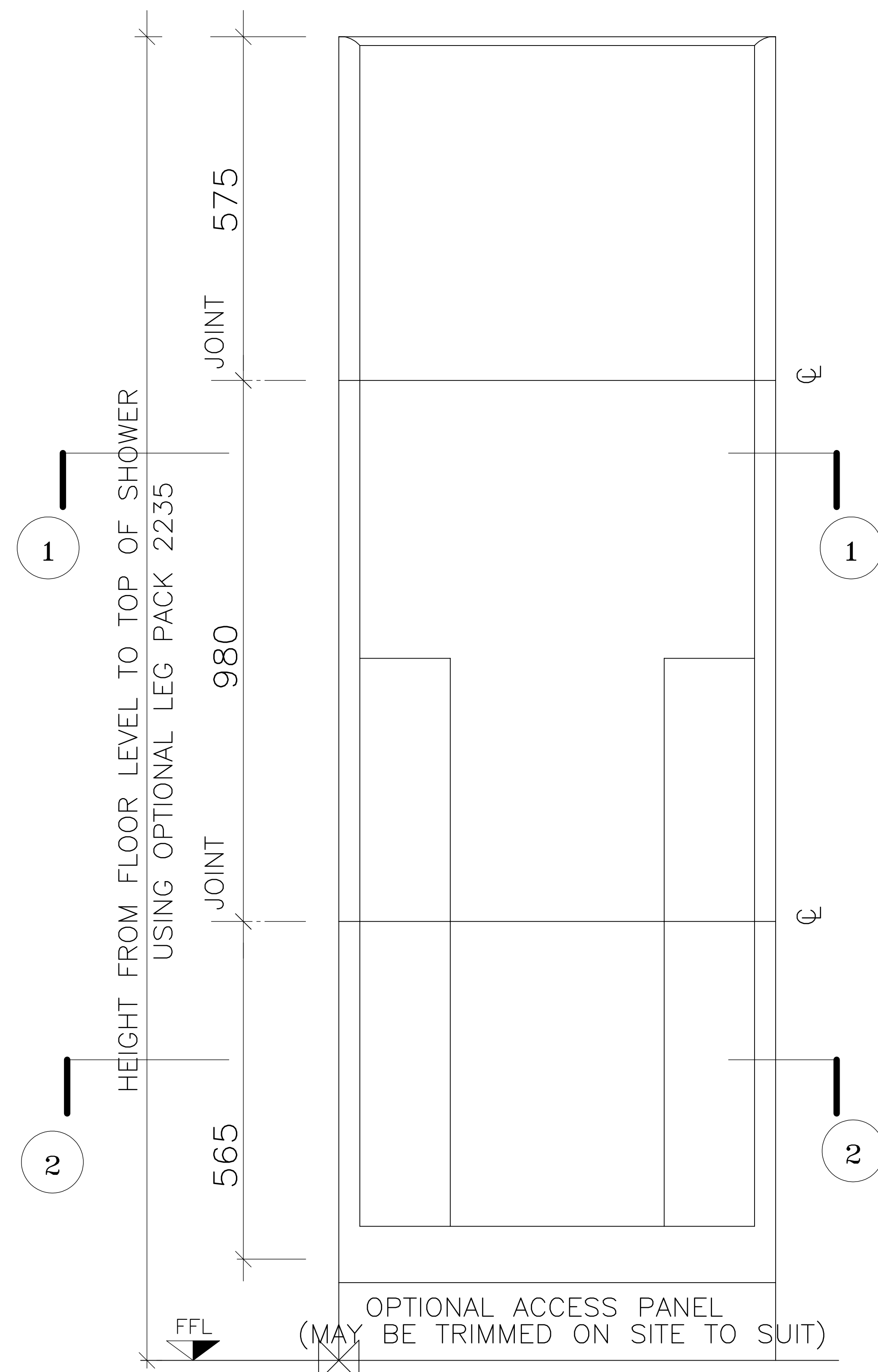
DETAIL E
SECTION THROUGH THRESHOLD & ACCESS PANEL



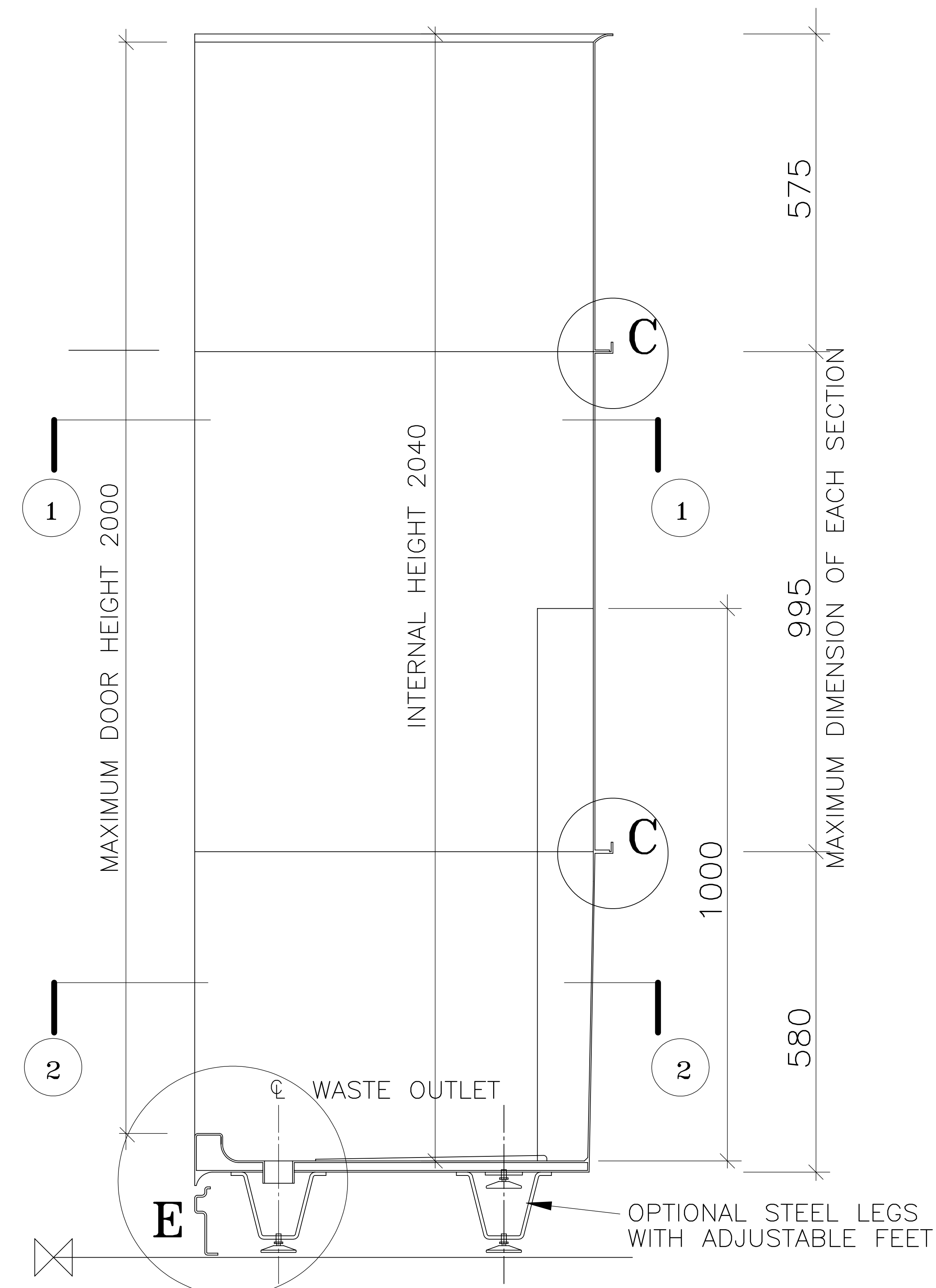
PLAN 1 - 1



PLAN 2 - 2



FRONT ELEVATION



SECTION XX

INTERNAL DIMENSIONS

Width 650mm
Depth 660mm
Height 2040mm

OVERALL EXTERNAL DIMENSIONS

Width 725mm
Depth 750mm
Height[†]
with legs 2235mm
without legs 2120mm

Approximate Weight 50Kg

[†]An additional 30mm is required for assembly

All dimensions shown are approximate and may vary slightly due to the manufacturing process

Allow normal building tolerances

Site conditions may vary, this drawing shows typical fixing details

Advanced Laminates Ltd T/A Advanced Showers has a programme of continuous development and research and reserves the right to change specifications and details without notice

650DXT+



This drawing is copyright to Advanced Laminates Ltd T/A Advanced Showers and must not be copied for reproduced without prior permission.

Advanced Showers
Unit 2, Deedmore Road
Coventry, CV2 1EQ

Email:
sales@advanced-showers.com
Website:
www.advanced-showers.com
Telephone: 02476 101 303

MOULDED COMPACT THREE PART SHOWER CUBICLE WITH OPEN TOP TO SUIT DOOR

TECHNICAL DRAWING

SCALE: NOT TO SCALE

