

INTERNAL DIMENSIONS

Width 1210mm
 Depth 720mm
 Height 1950mm

OVERALL EXTERNAL DIMENSIONS

Width 1255mm
 Depth 850mm
 Height †
 with legs 2115mm
 without legs 2000mm

Approximate Weight 52 Kg

†An additional 30mm is required for assembly

All dimensions shown are approximate and may vary slightly due to the manufacturing process

Allow normal building tolerances

Site conditions may vary, this drawing shows typical fixing details

Advanced Laminates Ltd T/A Advanced Showers has a programme of continuous development and research and reserves the right to change specifications and details without notice

1250DXT



This drawing is copyright to Advanced Laminates Ltd T/A Advanced Showers and must not be copied for reproduction without prior permission.

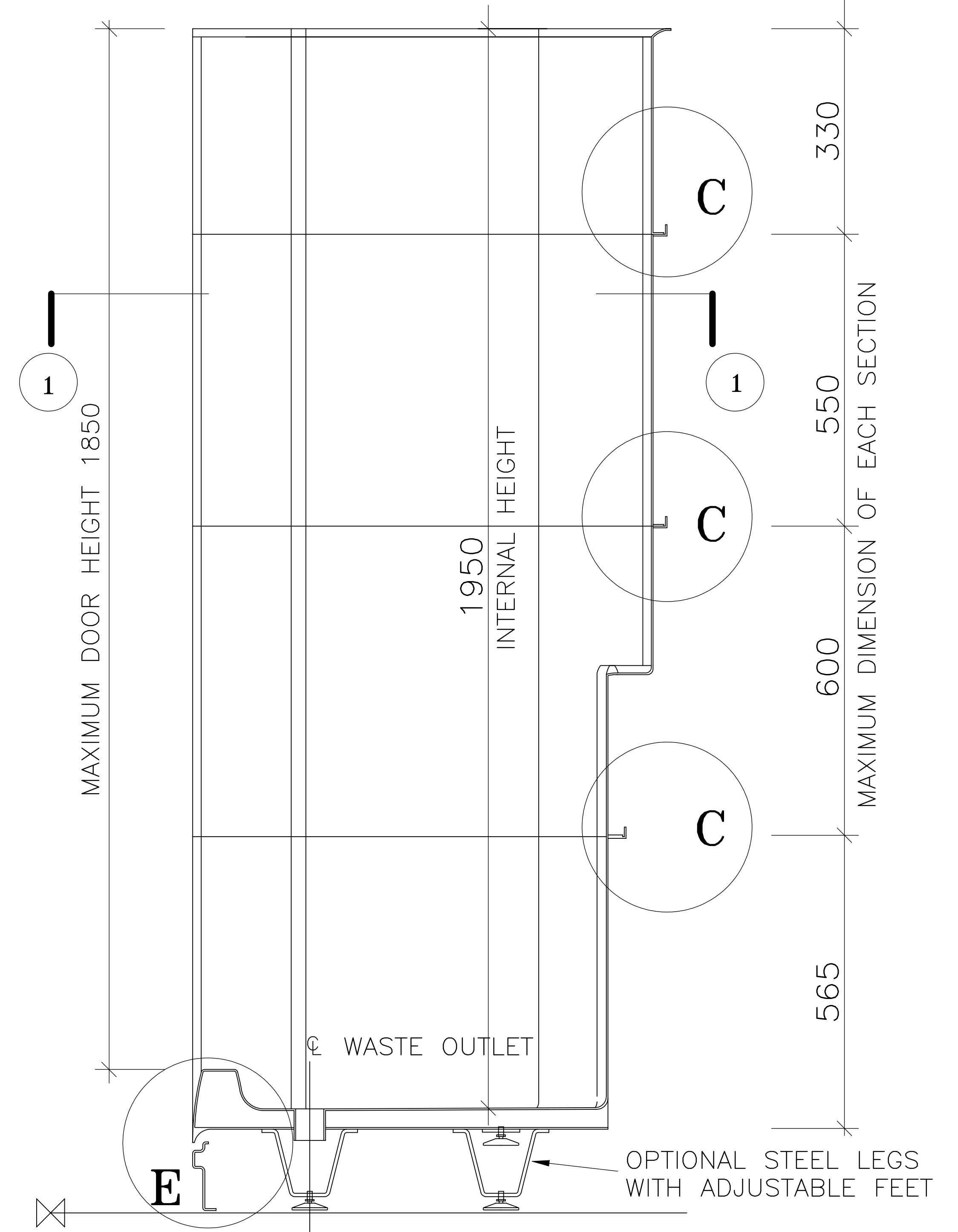
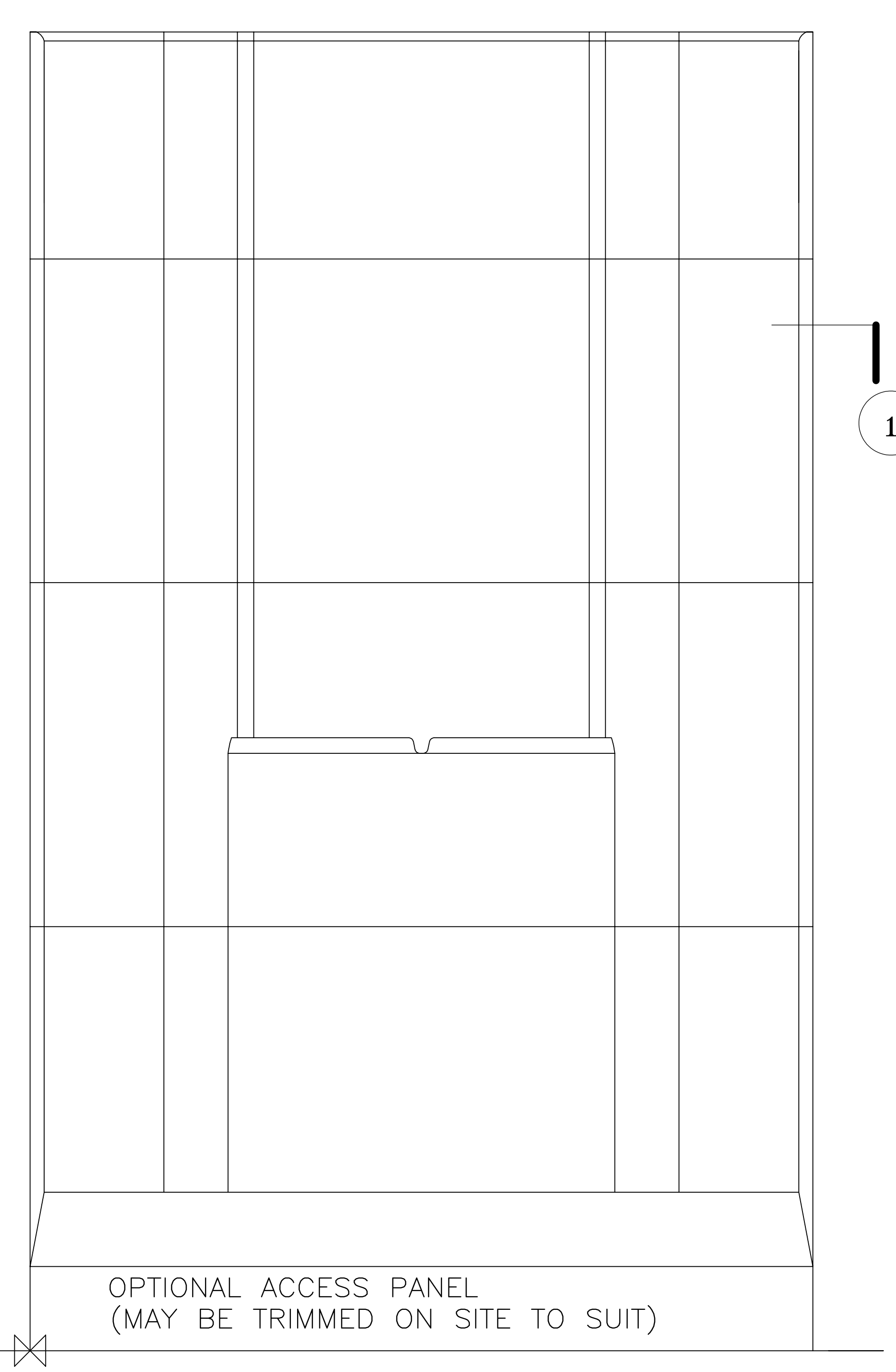
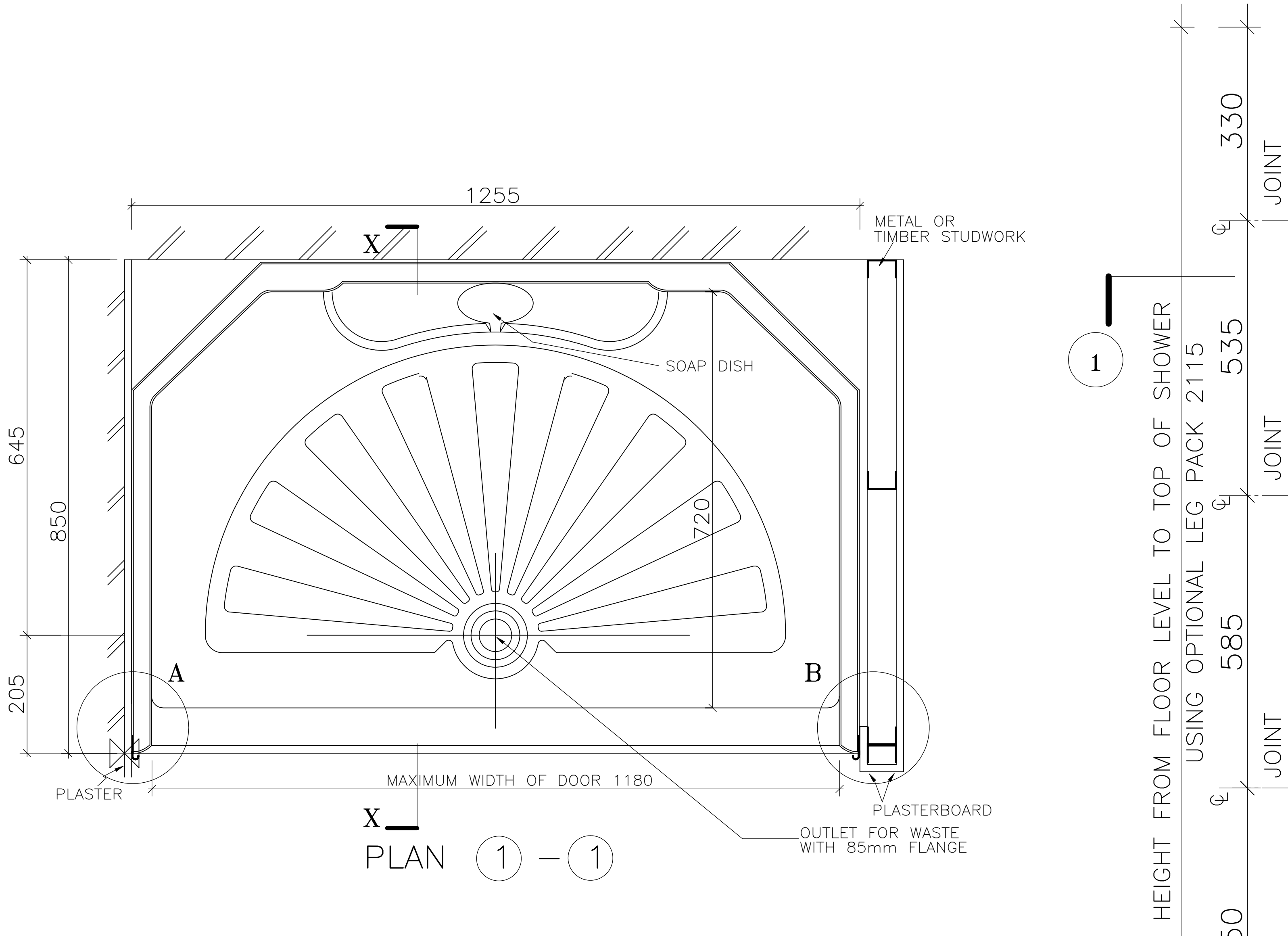
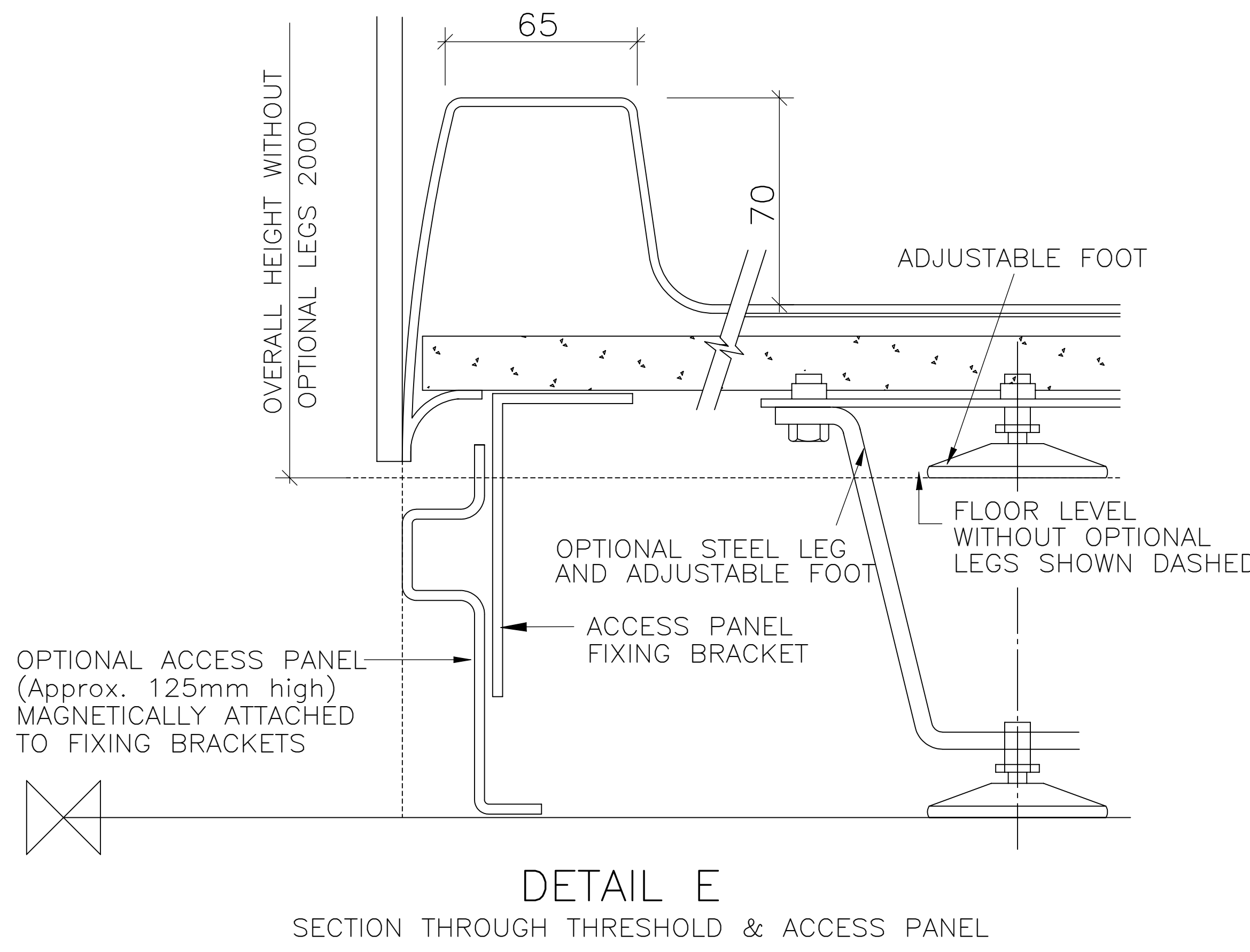
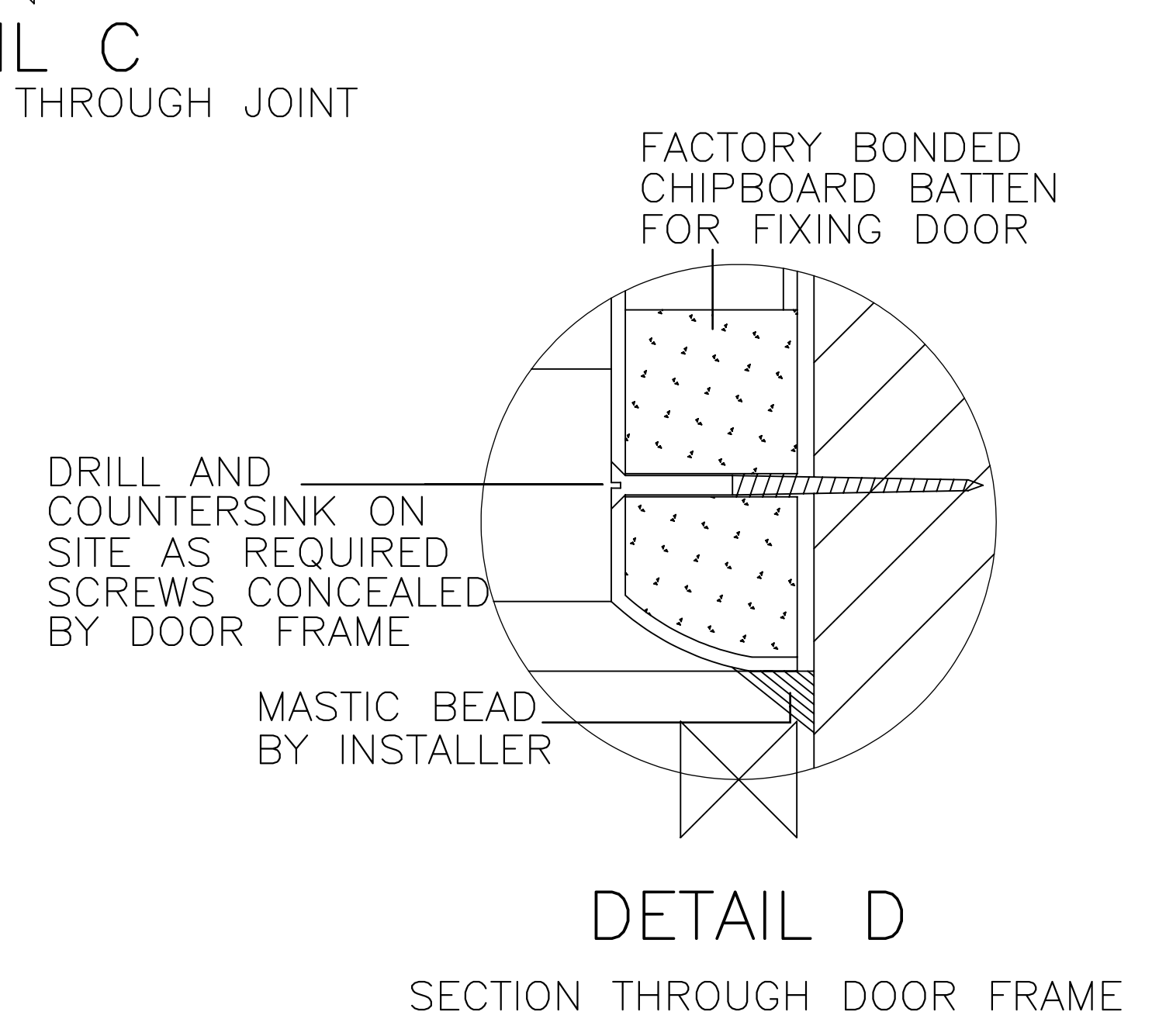
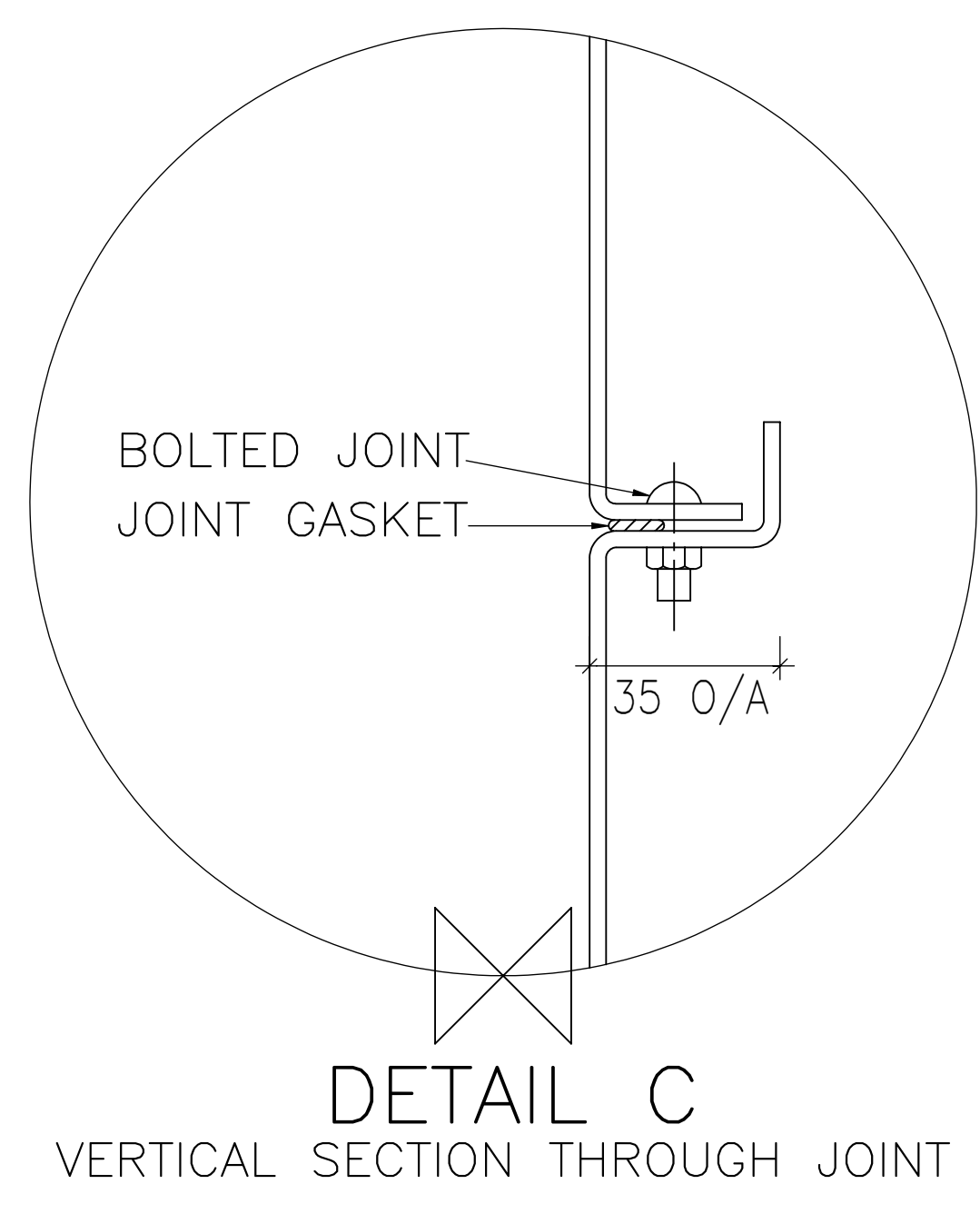
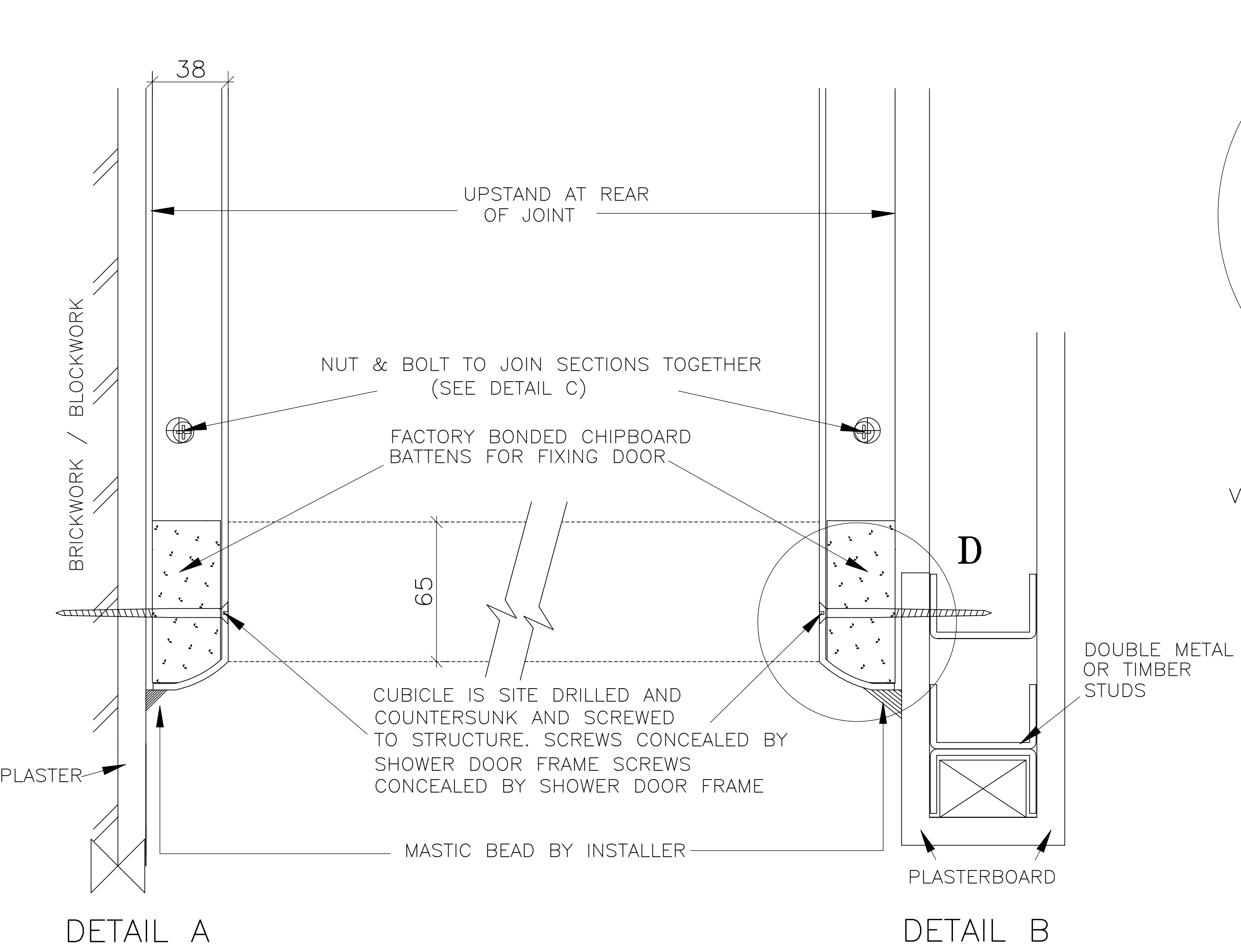
Advanced Showers
 Unit 2, Deedmore Road
 Coventry, CV2 1EQ

Email: sales@advanced-showers.com
 Website: www.advanced-showers.com
 Telephone: 02476 101 303

MOULDED SPACIOUS FOUR PART SHOWER CUBICLE TO SUIT IN-LINE DOOR AND SCREEN

TECHNICAL DRAWING

SCALE: NOT TO SCALE



FRONT ELEVATION

SECTION XX