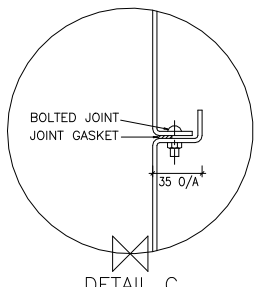
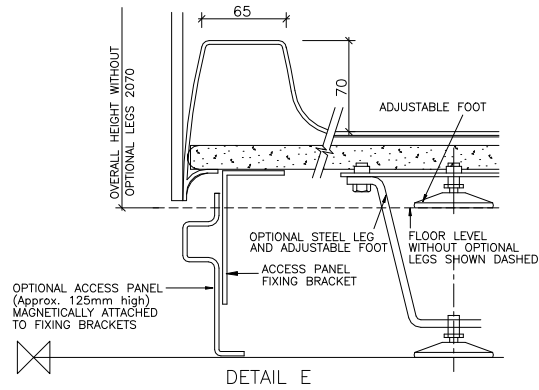


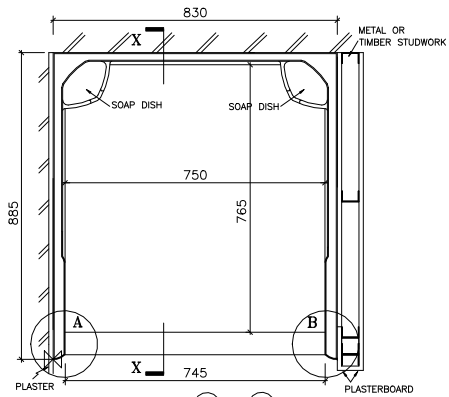
SUGGESTED DETAIL D  
SECTION THROUGH HEAD OF SHOWER CUBICLE



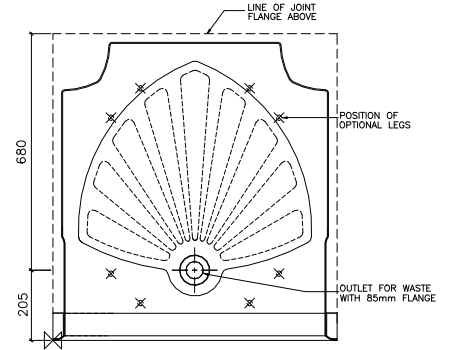
DETAIL C  
VERTICAL SECTION THROUGH JOINT



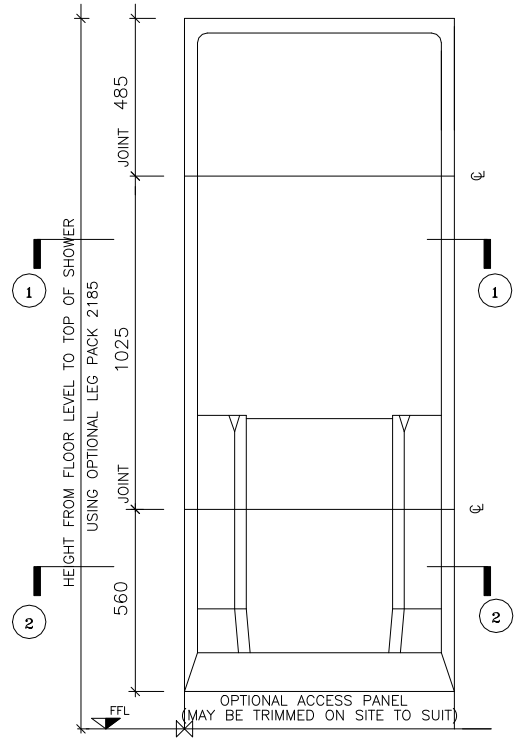
DETAIL E  
SECTION THROUGH THRESHOLD & ACCESS PANEL



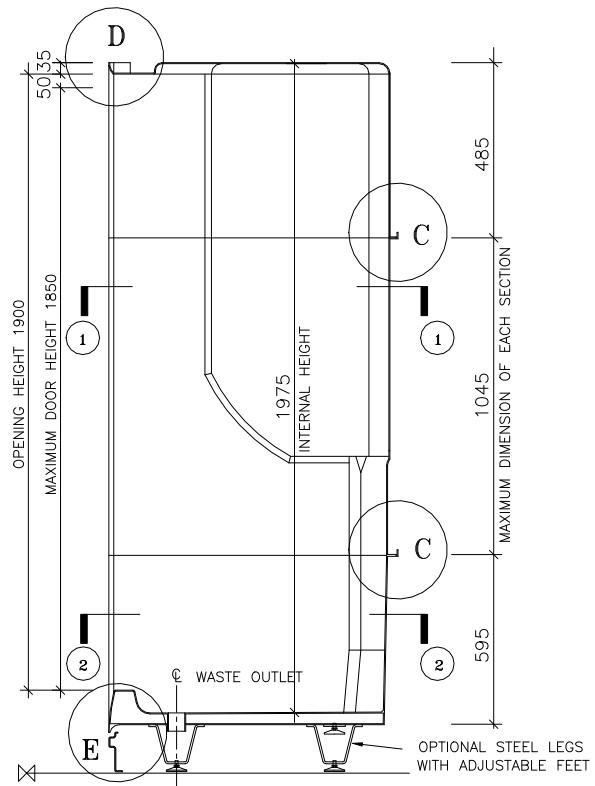
PLAN 1 - 1



PLAN 2 - 2



FRONT ELEVATION



SECTION XX

INTERNAL DIMENSIONS  
Width 750mm (2'5½")  
Depth 765mm (2'6")  
Height 1975mm (6'5¾")

OVERALL EXTERNAL DIMENSIONS  
Width 830mm (2'8¼")  
Depth 885mm (2'10¾")  
Height †  
with legs 2185mm (7'2")  
without legs 2070mm (6'9½")

Approximate Weight 60 Kg

†An additional 30mm is required for assembly

All dimensions shown are approximate and may vary slightly due to the manufacturing process

Allow normal building tolerances

Site conditions may vary. This drawing shows typical fixing details.

Advanced Showers has a programme of continuous development and research and reserves the right to change specifications and details without notice



U.K. patent No. 2281033  
European Patent No. 0639345  
This drawing is copyright to Advanced Showers International Ltd. And must not be copied or reproduced without prior permission.

ADVANCED SHOWERS INTERNATIONAL LTD  
UNIT 2 ALPHA BUSINESS PARK  
DEEDMORE ROAD  
COVENTRY CV2 1EQ

Email: sales@advanced-showers.com  
Web Site: www.advanced-showers.com  
Telephone: 01483 532020  
Facsimile: 01483 532080

MOULDED STARDARD THREE PART SHOWER CUBICLE TO SUIT DOOR

TECHNICAL DRAWING

SCALE: NOT TO SCALE